



Mesa Linear 9pc Multi-Pendant

Beautifully striated diffusers in LED-illuminated and artisan blown crystal glass evoke the rugged beauty of iconic Southwest landscapes in the Mesa linear pendant chandelier. Each is handcrafted by Hammerton artisans from up to five pounds of molten glass and is illuminated with 93 CRI integrated LED.

Finishes



Beige Silver
(BS)



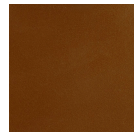
Flat Bronze
(FB)



Gilded Brass
(GB)



Matte Black
(MB)



Burnished
Bronze (BB)



Classic
Silver (CS)



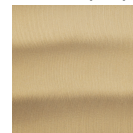
Graphite
(GP)



Novel Brass
(NB)



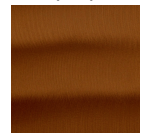
Gunmetal
(GM)



Heritage
Brass (HB)



Satin Nickel
(SN)

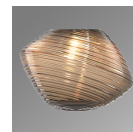


Oil Rubbed
Bronze (RB)

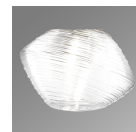
Glass Colors



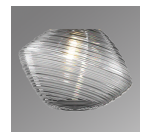
Amber (A)



Bronze (B)



Clear (C)



Smoke (S)

Product Notes - PLEASE READ:

- All Hammerton Studio fixtures are handcrafted by artisans. Subtle imperfections reflect the mark of the maker and should be expected.
- This product may incorporate both steel and aluminum material. Transparent finishes may vary between steel and aluminum components.
- Products incorporating artisan blown and cast glass may create dramatic patterns of light and shadow on surrounding surfaces. While this is often desirable, shadowing can be minimized by adding recessed ceiling light to the installation area.

General Notes:

- Visit studio.hammerton.com to read our complete warranty.
- All dimensions are in inches unless otherwise noted. Dimensions may vary up to 7/8".

Revision date: 2025-02-17

[Scan for Product & Install Info](#)



Mesa Linear 9pc Multi-Pendant

Product Dimensions *Dimensions may vary up to 7/8"*

Overall Height	OAH	17.8 – 135.8 in
Overall Width	OAW	69.2 in
Overall Depth	OAD	14.7 in
Canopy Height	CH	1.7 in
Canopy Width	CW	62.5 in
Canopy Depth	CD	8.4 in

Glass Dimensions

Large Qty		3
Medium Qty		3
Small Qty		3
Large Glass Height	GH	10.5 in
Large Glass Width	GW	8.4 in
Medium Glass Height	GH	5.5 in
Medium Glass Width	GW	7.6 in
Small Glass Height	GH	4.5 in
Small Glass Width	GW	6.3 in

Electrical

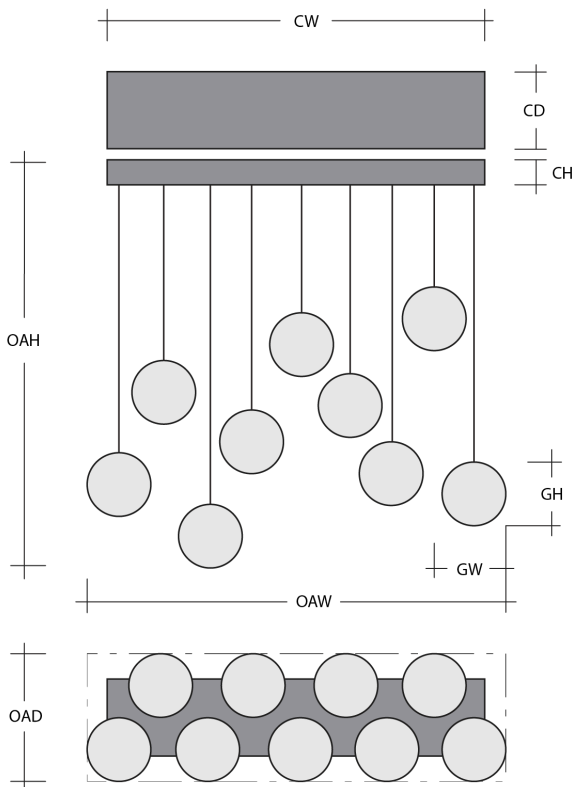
Bulb/Lamping Qty	9
Bulb/Lamping Type	LED
Wattage	47 watts
Voltage	120 volts
Total Source Lumens	3782 lumens
Dimming Type	TRIAC/ELV
Correlated Color Temp: CCT	2700K or 3000K
Color Rendering Index: CRI	93+
Certification	ETL

Installation & Mounting

Weight: Lbs	59 lbs
Mounting Type	Structural
Suspension Type	Cloth Cord
Flat or Sloped	Sloped
Max Slope	SA 45 degrees
Slope Orientation	All
Location	Indoor/Dry

Other Information

Warranty	See Website
----------	-------------



Project Notes

Name:

Location:

Quantity:

Finish Color:

Glass Color:

Notes: