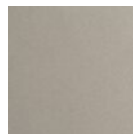


## Single Glass Sconce & Flush Mount - Gem

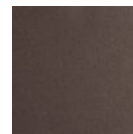
An inspired alternative to standard builder-grade fixtures, our Gem single glass sconce & flush mount offers a sparkling solution for secondary wall and ceiling spaces throughout the home. Includes integrated LED illumination and a choice of several glass colors and finishes.



### Finishes



Beige Silver  
(BS)



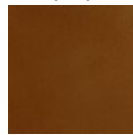
Flat Bronze  
(FB)



Gilded Brass  
(GB)



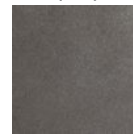
Matte Black  
(MB)



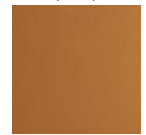
Burnished  
Bronze (BB)



Classic  
Silver (CS)



Graphite  
(GP)



Novel Brass  
(NB)

### Glass Colors



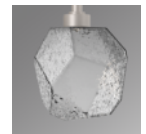
Amber (A)



Bronze (B)



Clear (C)



Smoke (S)

### Product Notes - PLEASE READ:

- All Hammerton Studio fixtures are handcrafted by artisans. Subtle imperfections reflect the mark of the maker and should be expected.
- This product may incorporate both steel and aluminum material. Transparent finishes may vary between steel and aluminum components.
- Products incorporating artisan blown and cast glass may create dramatic patterns of light and shadow on surrounding surfaces. While this is often desirable, shadowing can be minimized by adding recessed ceiling light to the installation area.

### General Notes:

- Visit [studio.hammerton.com](http://studio.hammerton.com) to read our complete warranty.
- All dimensions are in inches unless otherwise noted. Dimensions may vary up to 7/8".

Revision date: 2025-01-09

[Scan for Product & Install Info](#)



### Single Glass Sconce & Flush Mount - Gem

**Product Dimensions** *Dimensions may vary up to 7/8"*

Overall Height	OAH	8.5 in
Canopy Height	CH	0.8 in
Canopy Diameter	CDia	6 in

**Glass Dimensions**

Medium Qty		1
Medium Glass Height	GH	6.1 in
Medium Glass Width	GW	6.4 in

**Electrical**

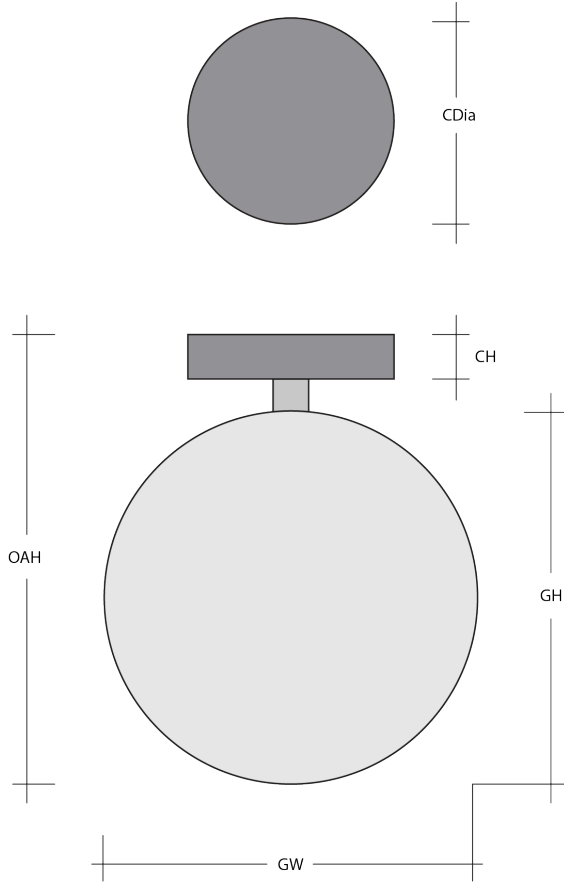
Bulb/Lamping Qty	1
Bulb/Lamping Type	LED
Voltage	120 volts
Total Source Lumens	420 lumens
Dimming Type	TRIAC/ELV
Correlated Color Temp: CCT	2700K or 3000K
Color Rendering Index: CRI	93+
Certification	ETL

**Installation & Mounting**

Mounting Type	J-Box
Flat or Sloped	Sloped
Slope Orientation	All
Location	Indoor/Dry

**Other Information**

Warranty	See Website
----------	-------------



**Project Notes**

Name:

Location:

Quantity:

Finish Color:

Glass Color:

Notes: