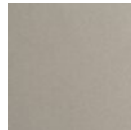




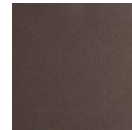
## Mobile - 4pc - Cumulus

Undulating layers of precision-crafted metal bring a playful sophistication to this modern chandelier style. Arms rotate easily to accommodate different configurations. 4 and 6-light sizes are available in a choice of several single and two-tone finish combinations. Now available for preorder for Q2 shipment.

### Finishes



Beige Silver  
(BS)



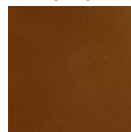
Flat Bronze  
(FB)



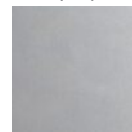
Gilded Brass  
(GB)



Matte Black  
(MB)



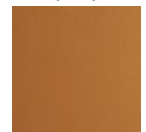
Burnished  
Bronze (BB)



Classic  
Silver (CS)



Graphite  
(GP)



Novel Brass  
(NB)

### Glass Colors

Matching  
Inner (MI)

White Inner  
(WI)

Black Inner  
(BI)

### Product Notes - PLEASE READ:

- All Hammerton Studio fixtures are handcrafted by artisans. Subtle imperfections reflect the mark of the maker and should be expected.
- This product may incorporate both steel and aluminum material. Transparent finishes may vary between steel and aluminum components.
- Products incorporating artisan blown and cast glass may create dramatic patterns of light and shadow on surrounding surfaces. While this is often desirable, shadowing can be minimized by adding recessed ceiling light to the installation area.

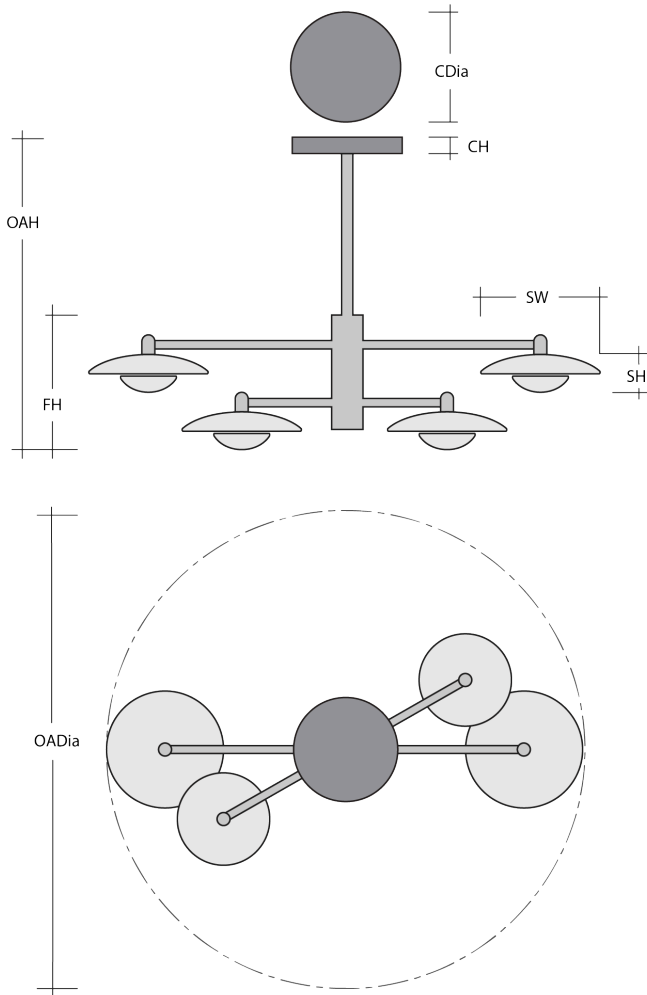
### General Notes:

- Visit [studio.hammerton.com](http://studio.hammerton.com) to read our complete warranty.
- All dimensions are in inches unless otherwise noted. Dimensions may vary up to 7/8".

Revision date: 2025-01-07

[Scan for Product & Install Info](#)





## Mobile - 4pc - Cumulus

### Product Dimensions *Dimensions may vary up to 7/8"*

Overall Height	OAH	19.7 – 76.7 in
Overall Diameter	OADia	55 in
Canopy Height	CH	1.2 in
Canopy Diameter	CDia	9 in
Fixture Height	FH	13.3 in

### Glass Dimensions

Large Qty	2
Medium Qty	2

### Shade Dimensions

Large Shade Qty	2	
Medium Shade Qty	2	
Large Shade Height	SH	5.2 in
Large Shade Width	SW	16 in
Medium Shade Height	SH	5.2 in
Medium Shade Width	SW	14 in

### Electrical

Bulb/Lamping Qty	4
Bulb/Lamping Type	LED
Wattage	14 watts
Voltage	120 volts
Total Source Lumens	1360 lumens
Dimming Type	TRIAC/ELV
Correlated Color Temp: CCT	3000K
Color Rendering Index: CRI	93+
Certification	ETL

### Installation & Mounting

Weight: Lbs	29 lbs	
Mounting Type	J-Box	
Suspension Type	Rod	
Flat or Sloped	Sloped	
Max Slope	SA	25 degrees
Location	Indoor/Dry	

### Other Information

Warranty	See Website
----------	-------------

### Project Notes

Name:

Location:

Quantity:

Finish Color:

Glass Color:

Notes: