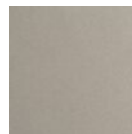




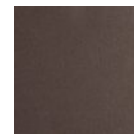
## Mandrel Round 3pc Multi-Pendant - Aalto

Suitable for a wide range of interior spaces, these statement-making pendant chandeliers feature three or five Aalto mandrel single pendants suspended from a round canopy. Each 18”H pendant provides both ambient and downward-directed LED illumination and includes 10 feet of matching field-adjustable braided cord. Now available for preorder for Q2 shipment. Make this fixture uniquely yours with additional configuration options including multiple glass styles, glass colors, cord colors and cord lengths. Here's how >

### Finishes



Beige Silver (BS)



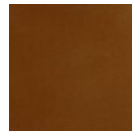
Flat Bronze (FB)



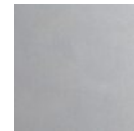
Gilded Brass (GB)



Matte Black (MB)



Burnished Bronze (BB)



Classic Silver (CS)



Graphite (GP)



Novel Brass (NB)

### Glass Colors



Amber (A)



Bronze (B)



Clear (C)



Smoke (S)

### Product Notes - PLEASE READ:

- All Hammerton Studio fixtures are handcrafted by artisans. Subtle imperfections reflect the mark of the maker and should be expected.
- This product may incorporate both steel and aluminum material. Transparent finishes may vary between steel and aluminum components.
- Products incorporating artisan blown and cast glass may create dramatic patterns of light and shadow on surrounding surfaces. While this is often desirable, shadowing can be minimized by adding recessed ceiling light to the installation area.

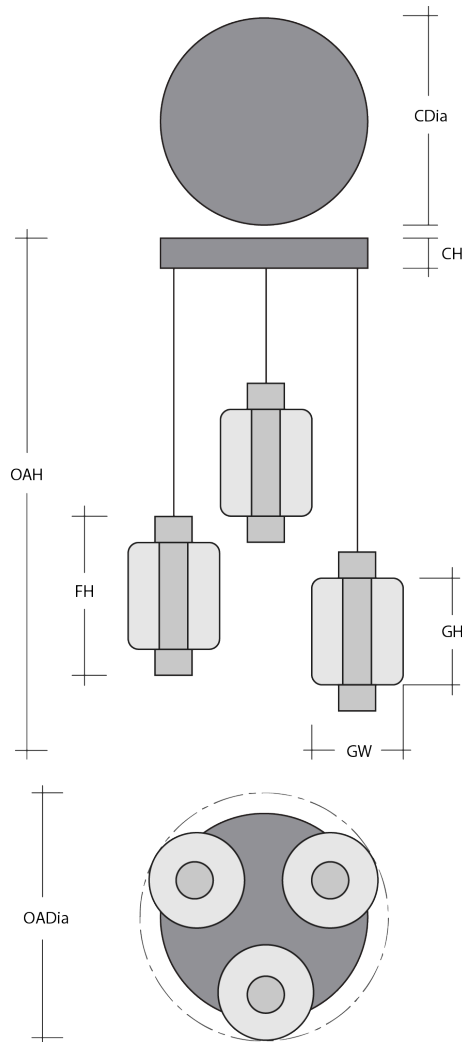
### General Notes:

- Visit [studio.hammerton.com](https://studio.hammerton.com) to read our complete warranty.
- All dimensions are in inches unless otherwise noted. Dimensions may vary up to 7/8”.

Revision date: 2025-01-08

[Scan for Product & Install Info](#)





## Mandrel Round 3pc Multi-Pendant - Aalto

### Product Dimensions *Dimensions may vary up to 7/8"*

|                  |       |               |
|------------------|-------|---------------|
| Overall Height   | OAH   | 17.4 – 144 in |
| Overall Diameter | OADia | 19.5 in       |
| Canopy Height    | CH    | 1.6 in        |
| Canopy Diameter  | CDia  | 16.5 in       |
| Fixture Height   | FH    | 15.5 in       |

### Glass Dimensions

|                     |    |         |
|---------------------|----|---------|
| Medium Qty          |    | 3       |
| Medium Glass Height | GH | 10.8 in |
| Medium Glass Width  | GW | 7.5 in  |

### Electrical

|                            |  |             |
|----------------------------|--|-------------|
| Bulb/Lamping Qty           |  | 3           |
| Bulb/Lamping Type          |  | LED         |
| Wattage                    |  | 28.5 watts  |
| Voltage                    |  | 120 volts   |
| Total Source Lumens        |  | 2550 lumens |
| Dimming Type               |  | TRIAC/ELV   |
| Correlated Color Temp: CCT |  | 3000K       |
| Color Rendering Index: CRI |  | 93+         |
| Certification              |  | ETL         |

### Installation & Mounting

|                   |    |             |
|-------------------|----|-------------|
| Weight: Lbs       |    | 27 lbs      |
| Mounting Type     |    | J-Box       |
| Suspension Type   |    | Cloth Cord  |
| Flat or Sloped    |    | Sloped      |
| Max Slope         | SA | 45 degrees  |
| Slope Orientation |    | All         |
| Location          |    | Indoor/Damp |

### Other Information

|          |  |             |
|----------|--|-------------|
| Warranty |  | See Website |
|----------|--|-------------|

### Project Notes

Name:

Location:

Quantity:

Finish Color:

Glass Color:

Notes: