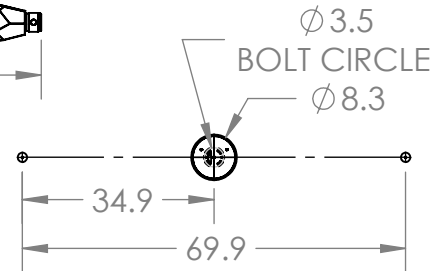


Mounting Detail
MOUNTS TO J-BOX



PRODUCT DESCRIPTION

Alternating beads of artisan blown crystal glass and metalwork evoke the bold look of modern jewelry designs in this linear chandelier. A glass mandrel inner spine illuminates the Gem crystal glass with 3000K integrated LED. Choose from several glass colors and finishes.

PRODUCT SPECIFICATION

Construction: Aluminum Housing, Steel Suspension, Glass Body

Finish Options:

Glass Options:

Suspension Method: Steel Cable

Weight(lbs.): 48LBs

UL Rating: Indoor/Dry

Top Diffuser: Closed Glass

Bottom Diffuser: Closed Glass/Acrylic Diffuser

Light Source: LED

Electrical Qty: 4

Wattage (Watts):67W

Voltage (Volts): 24V

Source Lumens: 6700 lm

Dimming: Forward/Reverse Phase to 1%

CCT: 3000K

Driver Quantity & Location: 1, in the Canopy

CRI: 93+

Power Factor: >0.9

SCAN FOR MORE INFORMATION



GENERAL NOTES:

All dimensions are shown in inches unless otherwise stated. Visit studio.hammerton.com to read about our Lifetime Limited Warranty. This product may use mixed materials like steel and aluminum in its construction. Transparent finishes may vary between steel and aluminum. Hammerton products are made by artisans, not machines. A close inspection may reveal subtle variations and imperfections in glass, metal and other handcrafted materials that reflect the mark of the maker. They should be expected and celebrated.