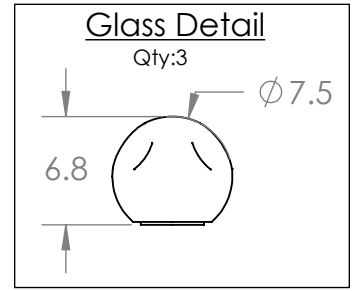
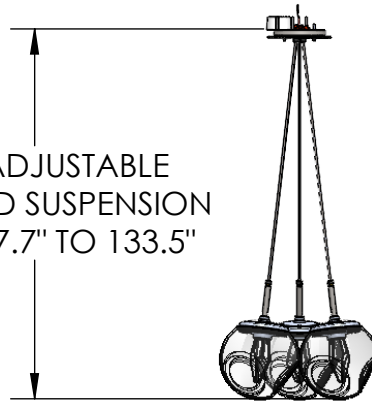
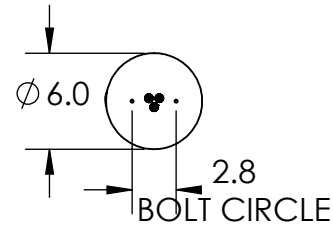
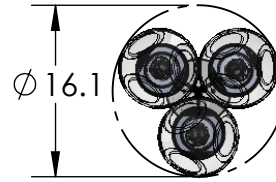




OAH ADJUSTABLE  
VIA CORD SUSPENSION  
FROM 17.7" TO 133.5"



Mounting Detail  
Mounts to J-Box



**PRODUCT DESCRIPTION**

A modern reinterpretation of the classic blown glass shade, the Luna Cluster replaces the traditional filament bulb with LED-illuminated artisan cast glass diffusers in a choice of three styles. Includes 93+ CRI integrated LED and a choice of three diffuser styles.

**PRODUCT SPECIFICATION**

Construction: Aluminum Body, Blown Glass, and Braided Cord

Finish Options:

Glass Options:

Suspension Method: Ceiling Mount

Weight(lbs.): 10

UL Rating: Indoor/Dry

Top Diffuser: Closed Glass

Bottom Diffuser: Closed Glass

Light Source: LED

Electrical Qty: 3

Wattage (Watts):16

Voltage (Volts): 120

Source Lumens: 1261

Dimming: Forward/Reverse Phase to 1%

CCT: 2700K or 3000K

Driver Quantity & Location: 1 Driver in J-Box

CRI: 93+

Power Factor: >0.9

SCAN FOR MORE  
INFORMATION



**GENERAL NOTES:**

All dimensions are shown in inches unless otherwise stated.

Visit [studio.hammerton.com](http://studio.hammerton.com) to read about our Lifetime Limited Warranty.

This product may use mixed materials like steel and aluminum in its construction. Transparent finishes may vary between steel and aluminum.

All Hammerton fixtures are handcrafted by artisans. Subtle imperfections reflect the mark of the artisan and should be expected in any handcrafted product. Dimensions may vary up to 7/8".

© Copyright 2022. All rights in design, detail or invention of this drawing are reserved as the property of Hammerton. Any imitation or adaptation without written consent is strictly prohibited.  
Hammerton Inc. 217 Wright Brothers Dr. Salt Lake City, UT 84116 (801)973-8095 | [studio.hammerton.com](http://studio.hammerton.com) | [info@hammerton.com](mailto:info@hammerton.com)