

All dimensions are shown in inches unless otherwise stated.

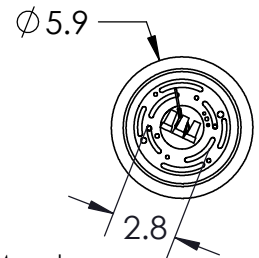
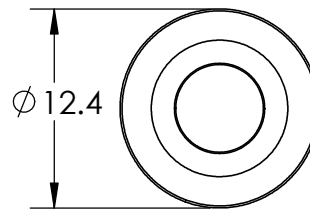
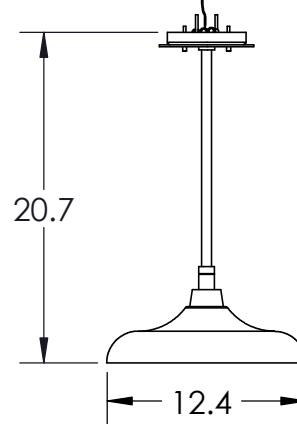


PRODUCT DESCRIPTION

A timeless vintage look makes the Ranch Pendant suit many of today's most popular architectural styles. AC LED lamping minimizes energy consumption and fixture maintenance. Choose from three AAMA 2604-rated all-weather finishes.

The Ranch Pendant is certified as Dark Sky Compliant by the International Dark Sky Association (IDA), and it includes a lifetime warranty to the original purchaser.

SCAN FOR MORE
INFORMATION



Mounting Method: J-Box Ceiling Mount

PRODUCT SPECIFICATION

Construction: Aluminum Body With Blown Glass

Finish Options: **AG** **SB** **TB**

Glass Types: **F**

Suspension Method: Ceiling Mount

Weight(lbs.): 5

UL Rating: Wet

Top Diffuser: Closed

Bottom Diffuser: Closed Glass

Light Source: LED

Electrical Qty: 1

Wattage (Watts): 4.5

Voltage (Volts): 120

Source Lumens: 400

Dimming: ELV to 1%

CCT: 3000K

Driver Quantity & Location: 0

CRI: 93+

Power Factor: >0.9

Notes:

GENERAL NOTES:

Visit studio.hammerton.com to read about our Lifetime Limited Warranty.

All Hammerton fixtures are handcrafted by artisans. Subtle imperfections reflect the mark of the artisan and should be expected in any handcrafted product. Dimensions may vary up to 7/8".

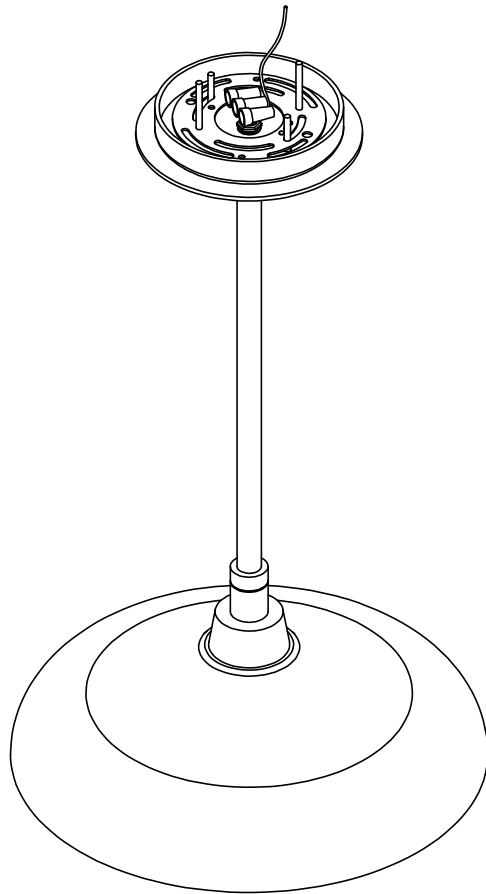
Rev  11/14/2023

© Copyright 2021. All rights in design, detail or invention of this drawing are reserved as the property of Hammerton. Any imitation or adaptation without written consent is strictly prohibited.

Hammerton Inc. 217 Wright Brothers Dr. Salt Lake City, UT 84116 (801)973-8095 | studio.hammerton.com | info@hammerton.com

REVISIONS

REV.	DESCRIPTION	Drawn By:	Drawn Date:	Approved By:	Approved Date:
A	CREATED NEW TEMPLATE TO UPDATE SPEC LAYOUT AND MAKE UPDATES FOR QUALITY.	JSHOEMAKER	4/8/2021		
B	MODEL ADDED TO DRAWING		3/23/2022		
C	ADDED HW PACK; CHANGED 4-40 SCREWS TO SS	JTIMMONS	12/14/2022		
D	TOTAL HEIGHT UPDATED	JGUTIERREZ	11/14/2023		



SPECIAL INSTRUCTIONS FOR FINISHER

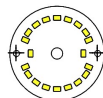
SPECIAL TOOLS:

FINISH INSTRUCTIONS:

UL MANUFACTURING STICKER:

HAMMERTON
ACLED-OD
MAX 120 Vac, 50/60 Hz, 38 mA
SUITABLE FOR WET LOCATIONS
MFG DATE YEAR: 21 22 23 24 25
MONTH: 1 2 3 4 5 6 7 8 9 10 11 12

ELECTRICAL:



BELIEVE LED BOARD
5-6mm cut length

PRODUCT #: OPB0074-01-L2

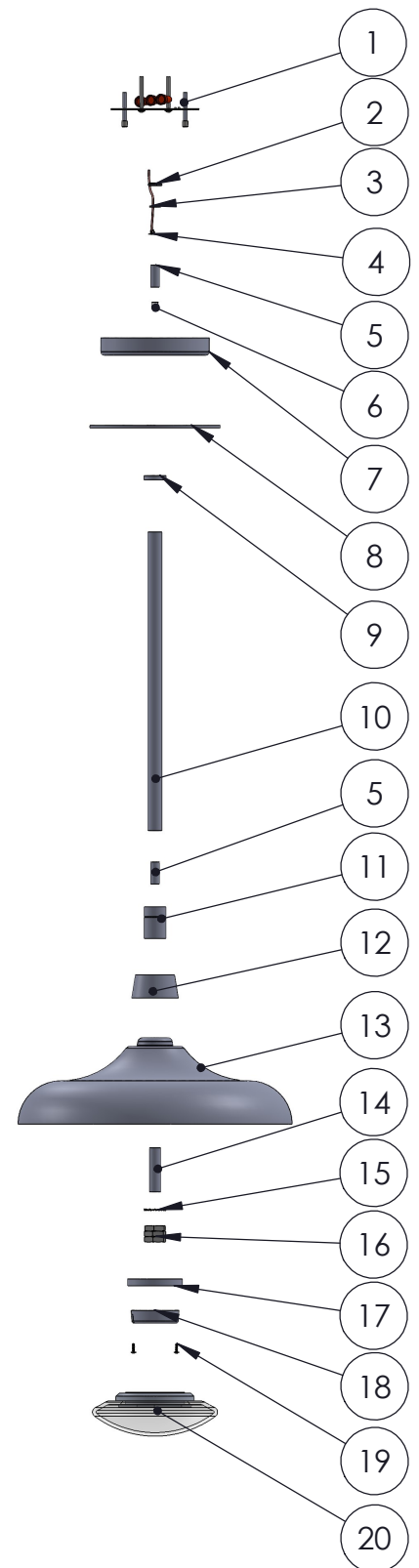
MOUNTING PACKET: Y

Rev: D

SHEET 2 OF 3

© Copyright 2016, All rights in design, detail or invention of this drawing are reserved as the property of Hammerton. Any imitation or adaptation without written consent is strictly prohibited.

NO.	PART NUMBER	QTY	ASSEM.	ORDER QTY	TOTAL	DESCRIPTION	STOCKED	PURCHASE REQUEST	FINISH	PACKED
1	HARDWARE PACK Y	1	1	1	1	CHANDELIER MOUNTING PACK UNDER 50 LBS CYLINDER KNOB	Y			
2	EL248	1	1	1	1	Hex nut, 1/8 IPS, 1/8" thick	Y			
3	EL119	1	1	1	1	B401 Lock Washer Slip 1/8 IPS	Y			
4	Ground Terminal-9"	1	1	1	1	Ground terminal, slip 1/8 IPS with 9" long lead	Y			
5	EL103	2	1	1	2	1" L, 1/8 IPS	Y			
6	32-010-04068	1	1	1	1	1/8 IPS pipe hole bushing	Y			
7	33-002-09045	1	1	1	1	Ranch Canopy - UNFINISHED	Y		PAINT	
8	33-002-09054	1	1	1	1	Farmhouse Canopy Faceplate - UNFINISHED	Y		PAINT	
9	33-002-09048	1	1	1	1	Machined Round Collar - UNFINISHED	Y		PAINT	
10	33-002-09059	1	1	1	1	Round Pendant Tube - UNFINISHED	Y		PAINT	
11	33-002-09050	1	1	1	1	Ranch Machined Cylinder Motif - UNFINISHED	Y		PAINT	
12	33-002-09060	1	1	1	1	Ranch Machined Cup Piece - UNFINISHED	Y		PAINT	
13	33-002-09046	1	1	1	1	Ranch Spun Shade - UNFINISHED	Y		PAINT	
14	EL280	1	1	1	1	2" L, 1/4 IPS	Y			
15	EL430	1	1	1	1	Zinc-Plated Steel External-Tooth Lock Washer, 0.576" ID, 0.985" OD (91114A034)	Y			
16	32-012-10031	3	1	1	3	Low-Pressure Chrome-Plated Brass Pipe Fitting	Y			
17	33-002-09047	1	1	1	1	Machined LED Mount	Y			
18	32-010-05063	1	1	1	1	AC LED DISC D052-0401-5930-120A	Y			
19	32-012-13066	2	1	1	2	4-40 x .375" Long, Pan Head Phillips Machine Screw - SS	Y			
20	33-002-09063	1	1	1	1	Ranch Glass with Glass Retention	Y			



HAMMERTONSTUDIO™

PART NUMBER: OPB0074-01-L2

REV: D

DESCRIPTION: Ranch Pendant

SHEET 3 OF 3