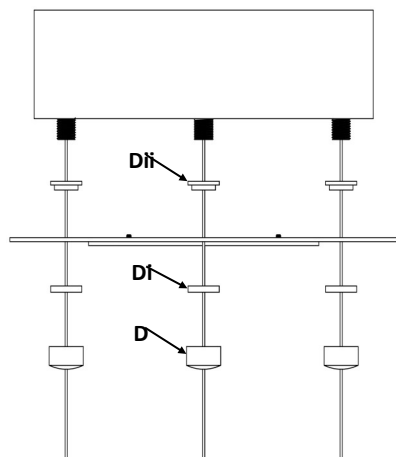
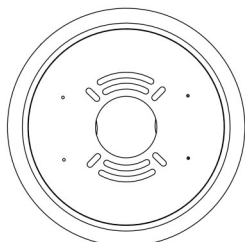


**Step 1:** Remove Face Plate (C) from Canopy (B) by unscrewing the Cable Stop Caps (Di). The Caps (D,i), Face Plate (C), and Bushings (Dii, Diii) will slide down cables (F)

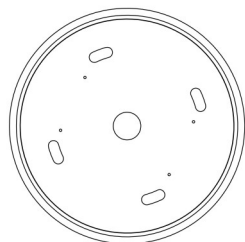


**Step 2:** Mount Canopy (B) to ceiling using the appropriate Hardware Packet (A) and included instructions.

**HARDWARE PACKET T: MOUNTS TO J-BOX**



**HARDWARE PACKET Z:**

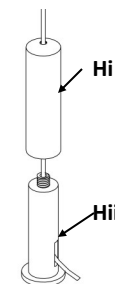


**Step 3:** Replace Bushings (Dii, Diii), Face Plate (C), and Caps (Di),

**Step 4:** Cables (F) and Cable Grippers (H) are marked by a numbered tag (e.g. 1-1). Each Cable (F) will be inserted into the Cable Gripper (H) marked with the same number.

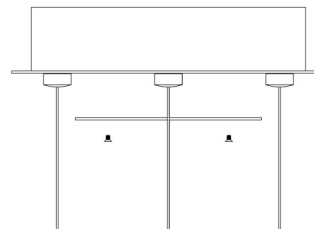
**Step 5:** After locating the corresponding Cable (F) and Cable gripper (H), unscrew the Cable Gripper Cap (Hi). Thread the Cable (F) through the Cap (Hi) and into the Gripper Body (Hii). Adjust fixture height by pushing or pulling Cable through Gripper Body while depressing threaded

**CAUTION: CABLES ARE CONDUCTIVE. DO NOT POWER FIXTURE WHILE CABLES ARE IN CONTACT WITH ANY CONDUCTIVE SURFACE. THIS INCLUDES HAVING THE CABLE PROTRUDE THROUGH THE GRIPPER AND TOUCH THE BODY OF THE LIGHT FIXTURE.**

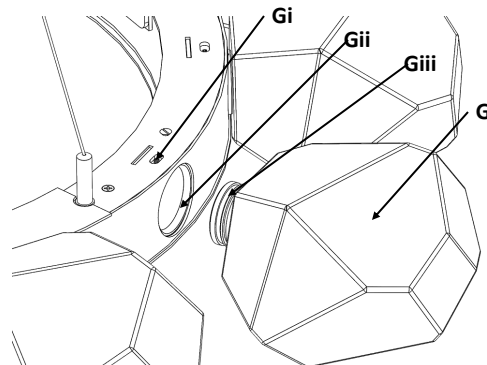


**Step 6:** Use a measuring tape and level to ensure the fixture is hanging at the desired distance from the Canopy. When desired height is attained cut excess Cable flush with Gripper Body. Thread Cable Gripper Cap back onto Body.

**Step 7:** Remove Cover Plate (E) from Face Plate (C) using the Philips Screw Driver. Make Electrical Connections from the building to the Drivers inside of Canopy using the wire nuts provided. Replace Cover plate.



**Step 8:** With the Top Plates removed, remove the set screws (Gi) from the main fixture body, using the supplied Allen key. Install the Glass Element (G) into the Female Receiver (Gii), connecting the wire terminal if the glass is Luna style. Line up the backmost groove on the Male Collar (Giii) with the setscrew hole. Install and tighten the set screw so it captures the groove in the collar. Tighten the set screw so it is flush with the top surface of the fixture body. The Glass Element may be rotated to achieve desired orientation. Lightly tighten the set screw until you feel it contact the surface of the Male Collar. Repeat for each Glass Element, keeping the fixture balanced during installation.



**Troubleshooting Guide**

- **Fixture does not illuminate**
  - Verify there is power to the fixture.
  - Cables are conductive. Cables with conductive surfaces, cables protrude through the body of the fixture.
  - Conductive cables need to be connected to corresponding cord gripper 1, 2 to 2, etc.
  - Verify that the red lead from the building is connected to the red conductive cable and the silver cord gripper.
- **Either down light or up light does not illuminate**
  - Cables are conductive. Cables with conductive surfaces, cables protrude through the body of the fixture.
  - Conductive cables need to be connected to corresponding cord gripper 1, 2 to 2, etc.
  - Verify that the red lead from the building is connected to the red conductive cable and the silver cord gripper.
- **One section of the up light or down light does not illuminate.**
  - Check that LED holder has been installed by gently pushing the LED into the holder. If the LED is not seated, the LED will not illuminate. While the fixture has power, tighten that holder. Tightening the holder may

Hammerton Studio brand in 2014, we  
 ility to raise the bar in decorative  
 ted to lead rather than follow. In  
 showcase Hammerton’s renowned  
 artisan craftsmanship and authentic  
 we wanted to provide highly reliable  
 industry norms for aesthetics,  
 d on the brand’s dramatic growth and  
 r we are on the right track.

## SIGN VALUE METALWORK

as a blacksmith shop, but we’ve come  
 ay we employ a world class team of  
 iplined in a broad range of fabrication  
 We’ve also added in-house capabilities  
 d glass, and today Hammerton  
 artisan glass production facilities in  
 and fabrication expertise at the  
 etalwork, we’re laying the foundation  
 novation.

## ERITAGE

nd stands on the shoulders of more  
 experience pushing the boundaries of  
 design. Each Hammerton Studio  
 by custom work our company has  
 on with leading interior design  
 s. Built to your specifications, every  
 omising design and attention to detail  
 n.

## EFFECTED BY OUR CLIENTS

extraordinary as the clients who  
 orbes 400 members, Fortune 500  
 ertainers, fashion and interior  
 and leading luxury hospitality brands.

mmerton Inc.  
 ight Brothers Drive  
 ke City, UT 84116

01-973-8095  
 hammerton.com  
[hammerton.com](http://hammerton.com)

# Warranty

## ONE YEAR LIMITED WARRANTY

Hammerton, Inc. (Hammerton) warrants the original owner that  
 this product will be free of defects in material or workmanship for  
 the period of one year from the date of original purchase from  
 Hammerton, if (i) the allegedly defective product has not been  
 abused, misused or improperly maintained and or repaired during  
 the warranty period, (ii) the defect is not caused by water  
 damage/flooding, fire, explosion, earthquakes or similar  
 phenomenon, and (iii) the defect is not caused by improper  
 installation (unless installed by Hammerton).

In order to obtain warranty service, the user must first complete  
 a warranty claims form. Hammerton will determine if the product  
 will be inspected on site or returned to Hammerton. If after the  
 inspection Hammerton finds that the product is defective as  
 claimed, Hammerton will, at its option, repair or replace the  
 product free of charge, or Hammerton may also agree to  
 outsource necessary repair work locally using local contracted  
 labor. Prior to any outsourcing of repair work regarding this  
 fixture, a Work Authorization Form must be signed by both the  
 client and Hammerton Representative. Failure to do so may result  
 in a denial of reimbursement. Hammerton warrants any replaced  
 or repaired products for ninety days after shipment or through  
 the end of the original warranty period, whichever is longer. All  
 products or parts that are replaced become the property of  
 Hammerton.

No representative or employee of Hammerton is authorized to  
 make any modification or addition to this limited warranty.

TO THE FULL EXTENT ALLOWED BY LAW, THE FOREGOING  
 WARRANTY AND REMEDIES ARE EXCLUSIVE, AND HAMMERTON  
 EXPRESSLY DISCLAIMS ALL OTHER WARRANTIES, EXPRESSED  
 OR IMPLIED, INCLUDING WITHOUT LIMITATION THE IMPLIED  
 WARRANTIES OF MERCHANTABILITY AND FITNESS FOR A  
 PARTICULAR PURPOSE. TO THE FULL EXTENT ALLOWED BY  
 LAW, HAMMERTON EXCLUDES AND DISCLAIMS LIABILITY,  
 WHETHER BASED IN CONTRACT OR TORT (INCLUDING  
 NEGLIGENCE FOR ANY CONSEQUENTIAL, INDIRECT INCIDENTAL  
 OR SPECIAL DAMAGES OF ANY NATURE ARISING OUT OF THE  
 SALE INSTALLATION, MAINTENANCE, USE OR FAILURE OF THIS  
 PRODUCT, EVEN IF HAMMERTON HAS BEEN ADVISED OF THE  
 POSSIBILITY OF SUCH DAMAGES IN ADVANCE, AND  
 HAMMERTON LIMITS ITS LIABILITY TO REPLACEMENT, REPAIR  
 OR REFUND OF THE PURCHASE PRICE PAID, AT HAMMERTON'S  
 OPTION.)

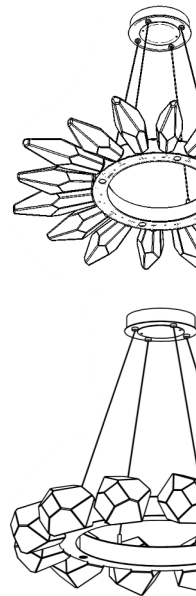
SOME STATES DO NOT ALLOW LIMITATIONS ON HOW LONG AN  
 IMPLIED WARRANTY LASTS AND/OR DO NOT ALLOW THE  
 EXCLUSION OR LIMITATION OF INCIDENTAL OR  
 CONSEQUENTIAL DAMAGES, SO THE ABOVE LIMITATION ON  
 IMPLIED WARRANTY AND INCIDENTAL OR CONSEQUENTIAL  
 DAMAGES MAT NOT APPLY TO YOU. THIS WARRANTY GIVES  
 YOU SPECIFIC LEGAL RIGHTS YOU MAY HAVE OTHER RIGHTS,  
 WHICH VARY FROM STATE TO STATE

# HAMMERTO

## Assembly Ins

CHB0039-36, CHB0039-  
 CHB0050-42, CHB0050-  
 CHB0095-36, CHB0095-

*Blown Glass  
 Radial Ring  
 Chandelier*



**WARNING:** FAILURE TO INSTALL TH  
 RESULT IN SERIOUS PERSONAL  
 PROPERTY DA

It is recommended that this produ  
 electricia